

Good Practices



- Leave the garbage in containers
- Walk on the marked trail
- Respect private properties and goods



- No animal captures are allowed
- No fire is allowed
- No fishing is allowed
- No plant collection is allowed



Emergency Telephone: 112



CÁDIZ MÁLAGA

PARQUE NATURAL Los Alcornocales

MORE INFORMATION

Los Alcornocales Natural Park
Pza. San Jorge n.º 1. 11180 Alcalá de los Gazules. Cádiz. T 956 41 86 01
Centro de Visitantes Cortes de la Frontera. Av. de la Democracia s/n
Cortes de la Frontera. Málaga Telf 952 15 45 99

www.ventanadelvisitante.es

© / Dirección / Coordinación: Consejería de Medio Ambiente, Junta de Andalucía.
Realización e imágenes: grupo entorno, Federación Andaluza de Montañismo, Archivo CMA y Juanlu González.



UNIÓN EUROPEA

Fondos Feder



JUNTA DE ANDALUCÍA
CONSEJERÍA DE MEDIO AMBIENTE

CÁDIZ-MÁLAGA



PARQUE NATURAL Los Alcornocales

Path

Vereda Ubrique Asomadillas



JUNTA DE ANDALUCÍA
CONSEJERÍA DE MEDIO AMBIENTE

COURSE

Circular

LENGTH

8,1 km

ESTIMATE TIME

3,30 minutes

DIFFICULTY

Medium

TRAIL

Trail with stones or rocky surface

VEGETATION

Embedded valley of the Hozgarganta River with slopes covered with dense vegetation. Panoramic views to Gibraltar.

SHADOW

Frequent

AUTHORIZATION REQUIRED

No

RECOMMENDATIONS

Bring water, comfortable shoes and clothes. In times of heavy rain, the footbridge can flood, so, it is not possible to cross the river. Please, visit the information office in Jimena de la Frontera, C/ Misericordia, Telf. number 673 314 780.

PROVINCE / MUNICIPALITIES

Cádiz / Jimena de la Frontera

SHEETS OF MTN 1:50.000

1071 - Jimena de la Frontera

COORDINATES START / END

36° 26' 30,86"N – 5° 27' 31,56"W



Reserva de la Biosfera



HOW TO GET THERE

This path starts at the end of Fuente Nueva Street in Jimena and just close to the Road CA-8201 (Jimena de la Frontera - Puerto Galis). We set out along the path to Ubrique flanked by wild olive trees and boobialla. If we hold the boobialla leaves up to the light we will see a lot of little dots. These are oldfactory receptor cells. After passing an area of bujeo mudflats and crossing a woodland track we see some stone pines, and a little further on we enter a dense pine grove. We then head towards the Asomadillas observatory balcony, from where we will have a good view of Gibraltar and Hozgarganta River. Walking from the observatory point down to the river we then follow the watercourse through a landscape of heath, rockrose and lavender. We cross the river and follow a cobbled path and then a gravel track



PARKING AREAS

There aren't any parking area at the beginning of the path but you can find some places to park close. Jimena is a good choice to consider.



PUBLIC TRANSPORT

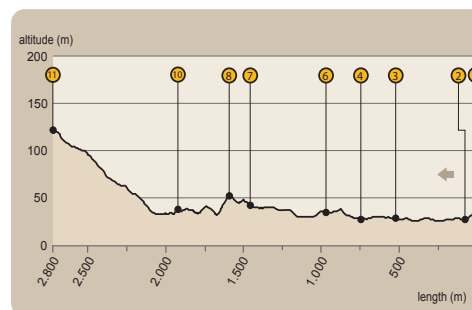
Bus Transport Comes: 902 19 92 08, www.tgcomes.es
Renfe: 902 24 02 02, www.renfe.es



OTHER TRAILS

+ Hozgartanta RiverTrail
+ GR7, it goes from Tarifa to Andorra

TRAVEL PROFILE



MAXIMUM DIFFERENCE

248 m

MAXIMUM LEVEL

278 m

MINIMUM LEVEL

30 m

PATH

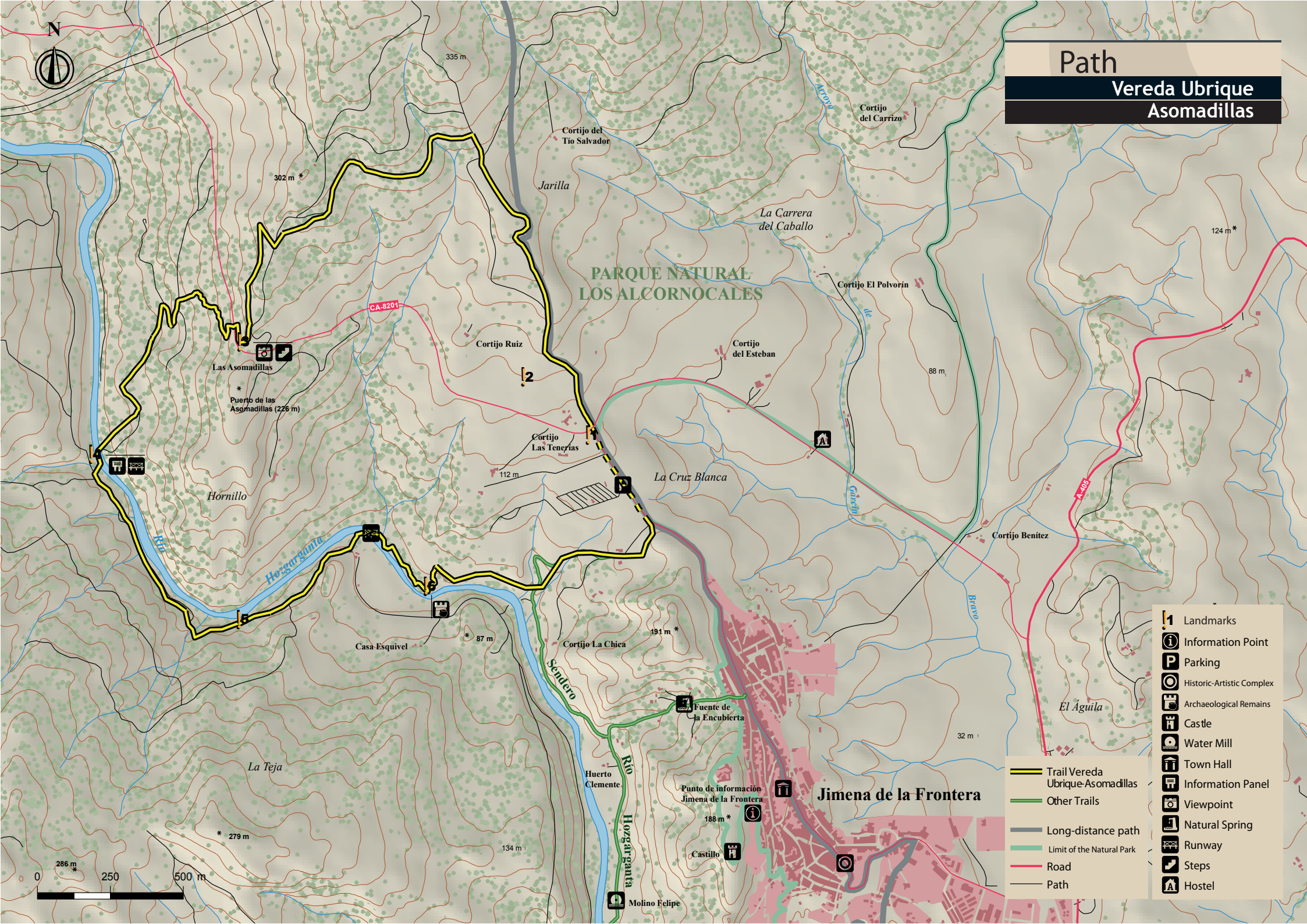
VEREDA UBRIQUE - ASOMADILLAS





Path

Vereda Ubrique Asomadillas



- Landmarks
- Information Point
- Parking
- Historic-Artistic Complex
- Archaeological Remains
- Castle
- Water Mill
- Town Hall
- Information Panel
- Viewpoint
- Natural Spring
- Runway
- Steps
- Hostel

- Trail Vereda Ubrique-Asomadillas
- Other Trails
- Long-distance path
- Limit of the Natural Park
- Road
- Path

